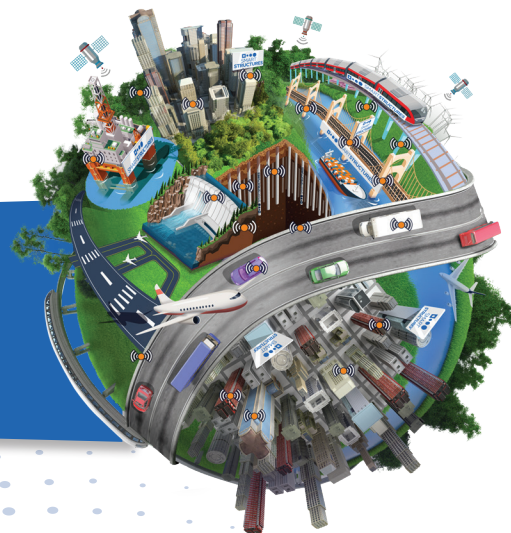


# SmartTiltmeter



## OVERVIEW

The Smart Tiltmeter is a rugged, high precision, all-digital solution for tilt monitoring of structural elements. Applications include structural health monitoring (SHM), deflection monitoring, construction quality control, and erection safety. This device includes an integral thermistor for temperature measurement. The device is easily mounted to the structure using built-in mounting holes. The aircraft grade aluminum housing is rugged and suitable for harsh corrosive environments. The device is IP67 rated against dust and pressure washdown ingress.

## SPECIFICATIONS

Sensor Configuration	Bi-axial, dual sensor
Range	$\pm 25^\circ$
Resolution	$\pm 4$ arc seconds
Accuracy	$\pm 9$ arc seconds
Environmental	-20°C to 85°C IP67 (Dust-tight, temporary submersion)

## CONNECTIVITY

Connection to PC, data acquisition system, or SCADA is accomplished using the built in waterproof RJ45 Network connection or 4-pin RS-485 half-duplex connection. Power is provided using either power over ethernet (POE) or a dedicated power carrier in the RS-485 port. The device complies with standard MODBUS RTU communication protocol for easy integration with other systems.

Dimensions	4.7 x 4.5 x 3.0 in
Connectivity	1x RJ45 / Cat5e Ethernet/IP MODBUS TCP 1x 4 pin RS-485 MODBUS RTU
Power	12 to 24VDC